

**DAV MODEL SCHOOL, KSTP, ASANSOL**  
**SESSION: 2024-25**  
**HOLIDAY HOMEWORK**  
**SUBJECT: ENGLISH**  
**WORKSHEET:1**

Name \_\_\_\_\_ Class \_\_\_\_\_ Sec \_\_\_\_\_ Roll no \_\_\_\_\_

---

**1. Read the following passage and answer the questions:**

Organic farming was being practiced in India years ago till the British ruled it. In traditional India agriculture was practiced using organic techniques where the fertilizers, pesticides were obtained from plants and animal products. Organic farming was the backbone of the Indian economy. Ploughing was done by bullocks and cowdung was being used as manure.

During the 1950s and 1960s, the ever increasing population of India and several natural calamities led to severe food crisis. As a result, the government was forced to import food grains from foreign countries, to increase food security the government had to increase food production. Several additional hectares of land was brought under cultivation.

Hybrid seeds were introduced. Natural and organic fertilizers were replaced by chemical fertilizers and locally made pesticides were replaced by chemical pesticides. As time went by, extensive dependence on chemical farming has led to a loss of land fertility. Requiring the farmers to use stronger and costlier pesticides. Due to increase cost of farming farmers are falling into the trap of money lenders who are exploiting them to know and forcing many to commit suicide.

a. Where were the fertilizers pesticides obtained from in traditional India?

---

---

b. What has increased the cost of farming?

---

---

c. Why do farmers commit suicide? Choose the correct option:

i. Due to indebtedness ii. Due to increased cost of farming iii. Due to exploitation iv. Due to personal issues

d. (A) Organic farming was being practiced in India years ago till the British ruled it.

(R) Organic farming was the backbone of the Indian economy.

i (A) and (R) are true

ii (A) is true but (R) is false

iii.(A) is true and (R) is the correct explanation of (A)

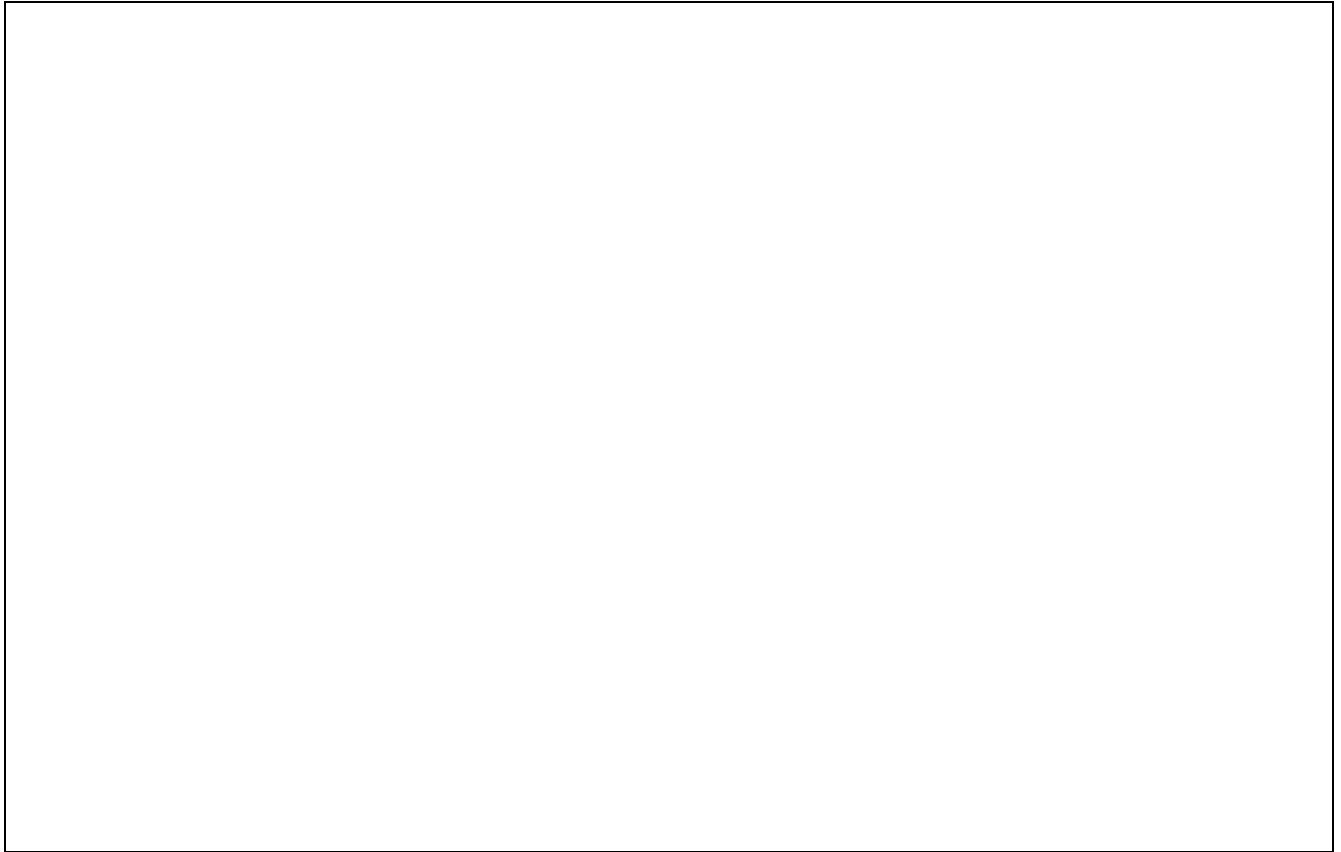
iv.(A) is true but (R) is not the correct explanation of (A)

e. Which word in the passage means 'huge'?

---

**2. Inter house debate competition of Sun public School was to be held on 18 April 2024 which has been postponed due to unavoidable circumstances. Draft a notice for the school notice board to inform the participants about the change. You are Sonal / Sanjay the cultural head.**

**1. You are Sakshi/Rohan . Write an email to your friend telling him/ her about the merits and demerits of AI tools.**



**2. Fill in the blanks with the correct form of the verbs given in brackets.**

Once when I (a) \_\_\_ (cross) the road, I (b) \_\_\_ (see) a small boy who (c) \_\_\_ (look) quite lost. I (d) \_\_\_ (ask) him the name of his parents but he (e) \_\_\_ (can) not answer. After waiting for a little while, I (f) \_\_\_ (bring) him home and (g) \_\_\_ (feed) him.

**DAV MODEL SCHOOL, KSTP, ASANSOL**  
**SESSION: 2024-25**  
**HOLIDAY HOMEWORK**  
**SUBJECT: ENGLISH**  
**WORKSHEET: 2**

Name \_\_\_\_\_ Class \_\_\_\_\_ Sec \_\_\_\_\_ Roll no \_\_\_\_\_

---

**1. Rearrange the following to form meaningful sentences:**

(a) ensures/life/it/longer/and/healthier/a

---

(b) laughter/fact/is/in/a/panacea/for/diseases/all.

---

(c) lowers/pressure/by/circulation/it/blood/increasing/blood

---

(d) a sense/and promotes/of/stress/well-being/laughter/decreases.

---

**2. Answer the following questions:**

a. Explain the ways in which the grandmother and the protagonist of the novel 'Kashi Yatre' were quite similar.

---

---

---

---

b. 'For men may come, men may go,

but I go on for ever'- Explain.

---

---

---

---







**D.A.V. MODEL SCHOOL, KSTP, ASANSOL**  
**HOLIDAY HOMEWORK**  
**SESSION 2024-2025**

**Class: IX**

**Subject: HINDI**

1. निम्नलिखित काव्यांश को ध्यानपूर्वक पढ़कर पूछे गए प्रश्नों के उत्तर लिखिए-  
काबा फिरि कासी भया, रामहिं भया रहीम।

मोट चून मैदा भया, बैठि कबीरा जीम।।

i. मनुष्य के मन से धार्मिक भेदभाव मिटने से क्या परिवर्तन हुए?

---

---

---

ii. दोहे में 'मोटचून' किसे कहा गया है? वह मैदा कैसे बन गया?

---

---

---

2. 'मानसरोवर' से कबीर का क्या आशय है?

---

---

---

3. कबीर ने ईश्वर-प्राप्ति के लिए किन प्रचलित विश्वासों का खंडन किया है?

---

---

---

---

---

---



4. यात्रा-वृत्तांत के आधार पर तिब्बत की भौगोलिक स्थिति का शब्द-चित्र प्रस्तुत करें। वहाँ की स्थिति आप के राज्य/ शहर से किस प्रकार भिन्न हैं?

---

---

---

---

---

---

---

---

5. विधानवाचक वाक्यों को निषेधवाचक वाक्यों में बदलना -

1. चोरों ने चोरी कर

लिया। \_\_\_\_\_

2. मजदूर ने काम पूरा

किया। \_\_\_\_\_

3. माली ने फूल

तोड़े \_\_\_\_\_

6. . अर्थ के आधार पर निम्नलिखित वाक्यों के भेद लिखिए

(i) वर्षा होने के कारण नालियाँ भर गईं। .....

(ii) आज ममता विद्यालय नहीं आई है। .....

(iii) क्या आप फ़िल्म देखने नहीं चलेंगे? .....

(iv) यदि अच्छे अंक आएँगे तो छात्रवृत्ति मिलेगी। .....

(v) अरे! यह गीत तुमने लिखा है। .....

(vi) संभवतः इस साल सिग्नेचर ब्रिज का काम पूरा हो जाए। .....

(vii) काश! महँगाई कम हो जाती। .....

(viii) इस प्रश्न का उत्तर लिखकर लाना। .....

(ix) यात्री पेड़ के नीचे लेटकर आराम कर रहा था। .....

(x) ऐसी सरदी में बाहर मत जाओ। .....



---

---

---

---

9. शब्दालंकार के भेद एवं उनका एक-एक उदाहरण लिखिए।

---

---

---

---

---

---

10. निम्नलिखित प्रश्नों के उत्तर लिखिए-

i. नाव किसका प्रतीक है? कवयित्री उसे कैसे खींच रही है?

उत्तर-

---

---

---

---

ii. कवयित्री भवसागर पार होने के प्रति चिंतित क्यों है?

उत्तर-

---

---

---

---

---

---

iii. कवयित्री ने अपने व्यर्थ हो रहे प्रयासों की तुलना किससे की है और क्यों?  
उत्तर-

---

---

---

---

iv. कवयित्री के मन में कहाँ जाने की चाह है? उसकी दशा कैसी हो रही है?  
उत्तर-

---

---

---

---

---

v. बंद द्वार की साँकल खोलने के लिए कवयित्री क्या आवश्यक मानती है?

---

---

---

11. सरकारी अस्पतालों की दुर्व्यवस्था को बताते हुए दैनिक समाचार पत्र के सम्पादक को पत्र लिखिए।

---

---

---

---

---

---



**D.A.V. MODEL SCHOOL**  
**HOLIDAY HOME WORK**  
**SESSION: 2024-2025**  
**WORK SHEET: 1**

**SUBJECT: BENGALI**

**CLASS: IX**

**১) প্রশ্নগুলির উত্তরদাও।**

ক) 'এমন সময় একটি বিদেশী নৌকা ঘাটে আসিয়া লাগিল' - সেখান থেকে কে বেরিয়ে এলেন ?

- i) একজন ভদ্রলোক ii) একজন অর্ধবয়সী ভদ্রলোক  
iii) একজন বৃদ্ধ ভদ্রলোক iv) এদের কেউ না

খ) 'বিশ্বস্তরবাবু স্তিমিত প্রদীপে রোগশয্যায় বসিয়া প্রতি মুহূর্তে ফটিকের মায়ের জন্য প্রতীক্ষা করতে লাগলেন' - এখানে বিশ্বস্তরবাবুর মনের কোন ভাবটি উদ্ভাসিত -

- i) দায়িত্বহীনতা ii) ফটিকের জন্য গভীর মমতা ও ভালোবাসা  
iii) উদাসীনতা ও দায়িত্ব ঝেড়ে ফেলার ইচ্ছা iv) ফটিকের জন্য চরম বিরক্তি

গ) নীলকণ্ঠ পাখি দেখতে কে কে গিয়েছিল ?

- i) নিশ্চিন্দিপুরের কয়েকজন লোক ii) অপু ও তার বাবা  
iii) অপু, দুর্গা সর্বজয়া ও হরিহর iv) এদের কেউ না

ঘ) মামার বাড়িতে এসে ফটিকের মায়ের উপর অত্যন্ত অভিমান হয়েছিল কারণ সে খুব অনিচ্ছার সঙ্গে কলকাতায় মামার বাড়িতে এসেছিল।

- i) মন্তব্য ভুল কারণটি সঠিক ii) মন্তব্যটি সঠিক কারণটি ভুল  
iii) কারণও মন্তব্য দুটোই ঠিক iv) কারণ ও মন্তব্য দুটোই ভুল

ঙ) মন্তব্য : বালকের দল এই প্রস্তাবে রাজি হয়েছিল যে মাখনকে শুদ্ধ, শালকাঠটি গড়াতে আরম্ভ করবে।

যুক্তি: কারণ তারা ভেবেছিল যে এই খেলাতে মাখনকে বেশ জন্ম করা যাবে।

- i) মন্তব্য ভুল কারণটি সঠিক ii) মন্তব্যটি সঠিক কারণটি ভুল  
iii) কারণও মন্তব্য দুটোই ঠিক iv) কারণ ও মন্তব্য দুটোই ভুল

চ) "সে বাঁদর কোথায় গেল।" -- কে, কার সম্পর্কে একথা বলেছে ?

- i) সর্বজয়া হরিহরকে ii) সর্বজয়া অপুকে  
iii) দুর্গা অপুকে iv) অপু দুর্গাকে

ছ) দুর্গার বয়স কত ?

- i) ৮ - ৯ বছর ii) ১০ - ১১ বছর iii) ১৩ - ১৪ বছর iv) ৯ - ১০ বছর

জ) বালক রশি ফেলিয়া কোথাও তাহার ——— পাইতেছে না। (শূন্যস্থানে সঠিক শব্দটি বসাত)

- i) গভীরতা ii) দল iii) স্পর্শ iv) নাগাল

ঝ) অপু জরানো আমের চাকলাগুলো প্রাণপণে গিলছিল কারণ তখনই তাকে বাবার সঙ্গে বাইরে যেতে হবে।

- i) মন্তব্য ভুল কারণটি সঠিক ii) মন্তব্যটি সঠিক কারণটি ভুল  
iii) কারণও মন্তব্য দুটোই ঠিক iv) কারণ ও মন্তব্য দুটোই ভুল

ঞ) কার্য: হরিহরের সঙ্গে কুঠির মাঠ দেখতে বেরিয়ে বালক অপু অবাক হয়ে চারিদিকে চেয়ে দেখছিল

কারণ: ৬ বছরের জীবনে সে এই দ্বিতীয়বার বাড়ি থেকে বাইরে এত দূরে এসেছে।

i) কার্য সঠিক, কারণ ভুল

iii) কার্য ভুল কারণ সঠিক

ii) কার্য ও কারণ দুটিই সঠিক

iv) কার্য ও কারণ দুটিই ভুল

২) সন্ধি যুক্ত করো :-

ক) চরণ + অমৃত =	খ) লঘু + উর্মি =
গ) উত্তম + ঋণ =	ঘ) রমা + ঈশ =
ঙ) তথা + এবচ =	চ) অভি + উৎথান =
ছ) প্র + উঢ় =	জ) আজ্ঞা + অধীন =

৩) সন্ধি বিচ্ছেদ করো :-

ক) ভবন =	খ) স্বল্প =
গ) গবালয় =	ঘ) নয়ন =
ঙ) প্রতুষ =	চ) জলৌকা =
ছ) পশুধম =	জ) নবোঢ়া =
ঝ) অণয় =	ঞ) প্রাপ্তি =

৪) প্রশ্নগুলির উত্তর দাও।

ক) "বিধবা এ প্রস্তাবে সহজেই সম্মত হইলেন।"- অ) বাক্যটি কোন রচনার অন্তর্গত? লেখক কে? আ) বিধবা মহিলার পরিচয় দাও। ই) বিধবা কোন প্রস্তাবে সহজেই সম্মত হইলেন?

উত্তর \_\_\_\_\_

\_\_\_\_\_

\_\_\_\_\_

\_\_\_\_\_

খ) "সভ্যতার নব নব কত তৃষ্ণা ক্ষুধা / উঠে কত হলাহল উঠে কত সুধা!" --

অ) কার লেখা, কোন রচনার অংশ? আ) উদ্ধৃত অংশটির প্রসঙ্গ উল্লেখ করে ব্যাখ্যা করো।

উত্তর \_\_\_\_\_

\_\_\_\_\_

\_\_\_\_\_

\_\_\_\_\_







**DAV MODEL SCHOOL, KSTP, ASANSOL**  
**HOLIDAY HOMEWORK (WORKSHEET - 1)**

**SESSION - 2024-2025**

**SUBJECT – MATHEMATICS**

**CLASS- IX**

**NAME-** \_\_\_\_\_, **SEC-** \_\_\_\_\_, **ROLL No.-** \_\_\_\_\_

---

**A. Multiple Choice Questions:**

1. The value of  $\frac{\sqrt{32}+\sqrt{48}}{\sqrt{8}+\sqrt{12}}$  is  
(a) 2            (b)  $\sqrt{2}$             (c) 4            (d) 4
2. The simplified form of  $13^{\frac{1}{5}} \div 13^{\frac{1}{3}}$  is  
(a)  $13^{\frac{2}{5}}$             (b)  $13^{\frac{8}{15}}$             (c)  $13^{\frac{-1}{15}}$             (d)  $13^{\frac{-2}{15}}$
3.  $\left(-\frac{1}{27}\right)^{-\frac{2}{3}}$  is equal to  
(a)  $8\left(\frac{1}{27}\right)^{-\frac{2}{3}}$             (b) 9            (c)  $\frac{1}{9}$             (d)  $27\sqrt{27}$
4. The coefficient of x in the expansion of  $(x - 3)^3$  is  
(a) 1            (b) 9            (c) 18            (d) 27
5. **Assertion (A):** Rational number lying between two rational numbers x and y is  $\frac{1}{2}(x + y)$ .  
**Reason (R):** There is one rational number lying between any two rational numbers.  
(a) Both A and R are true and R is the correct explanation of A.  
(b) Both A and R are true but R is not the correct explanation of A.  
(c) A is true but R is false.  
(d) A is false but R is true.

**B. Short Answer Type Questions:**

6. Find the value of the polynomial  $5x - 4x^2 + 3$  at  $x = 2$  and  $x = -1$ .

7. Using suitable identity, evaluate  $(-32)^3 + (18)^3 + (14)^3$

**C. Long Answer Type Questions:**

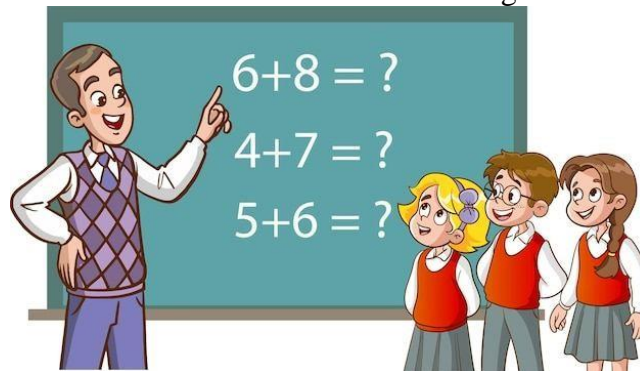
8. Find the value of a and b if  $\frac{3+\sqrt{2}}{3-\sqrt{2}} = a + b\sqrt{2}$ .

9. Find the value of  $x$ , if  $5^{x-3} \times 3^{2x-8} = 225$ .

**D. Case Based Questions:**

10. Mr. Kumar, a Mathematics teacher explained some key points of unit 1 of class IX to his students. Some are given here.

- There are infinite rational numbers between any two rational numbers.
- Rationalisation of a denominator means to change the irrational denominator to rational form.
- A number is irrational if its decimal form is non-terminating non-recurring.



On the basis of these key points, Answer the following questions

(a) What is the reciprocal of  $2 + \sqrt{3}$ ?

(b) Find a rational number between  $\sqrt{2}$  and  $\sqrt{3}$ .

(c) Simplify  $(\sqrt{3} - \sqrt{7})^3$

OR

Express  $\frac{4}{7}$  in decimal form and state the kind of decimal expression.

**DAV MODEL SCHOOL, KSTP, ASANSOL**  
**HOLIDAY HOMEWORK (WORKSHEET - 2)**

**SESSION - 2024-2025**

**SUBJECT – MATHEMATICS**

**CLASS- IX**

**NAME-** \_\_\_\_\_, **SEC-** \_\_\_\_\_, **ROLL No.-** \_\_\_\_\_

---

**A. Multiple Choice Questions:**

1. If  $(2x + 5)$  is a factor of  $2x^2 - k$ , then value of  $k$  is  
(a) 2                      (b)  $-1$                       (c) 25                      (d)  $\frac{25}{2}$
2. Factors of  $x^2 + 11x + 18$  are  
(a)  $(x + 9)(x - 2)$                       (b)  $(x - 9)(x - 2)$   
(c)  $(x - 9)(x + 2)$                       (d)  $(x + 9)(x + 2)$
3. Volume of a cuboid is  $3x^2 - 27$ . Then possible dimensions are  
(a) 3, 3, 3                      (b) 3,  $(x - 3)$ ,  $(x + 3)$                       (c) 3,  $x^2$ ,  $27x$                       (d) 3,  $x^2$ ,  $-27x$
4. If polynomial  $p(x) = 3x^4 - 4x^3 - 3x - 1$  is divided by  $(x - 1)$ , then remainder is  
(a) 3                      (b)  $-4$                       (c)  $-1$                       (d)  $p(1)$
5. **Assertion (A):**  $3x + 5$  is the linear polynomial.  
**Reason (R):** A polynomial of degree 1 is called linear polynomial.  
(a) Both A and R are true and R is the correct explanation of A.  
(b) Both A and R are true but R is not the correct explanation of A.  
(c) A is true but R is false.  
(d) A is false but R is true.

**B. Short Answer Type Questions:**

6. Find two different irrational numbers between the rational numbers  $\frac{5}{7}$  and  $\frac{9}{11}$ .
  
  
  
  
  
  
  
  
  
  
7. Represent  $\sqrt{2}$  in the real number line.
  
  
  
  
  
  
  
  
  
  
8. Factorise:  $x^3 + 9x^2 - 25x - 33$

9. In a restaurant at the time of payment, the owner says that you divide  $x^3 - 3x^2 - x + 6$  by  $x - 3$  and pay that money.



(a) If the owner returns the balance, then find the amount paid.

(b) Also find the remaining balance.

(c) Verify whether the following are zeroes of the polynomial, indicated against them.

$$p(x) = x^3 - 3x^2 + 4x - 12, x = 3$$

OR

Find the value of each of the following polynomials at the indicated value of variable:

$$p(y) = 5y^2 - 3y + 7 \text{ at } y = 1, -1$$

# DAV MODEL SCHOOL, KSTP, ASANSOL

SESSION: 2024-25

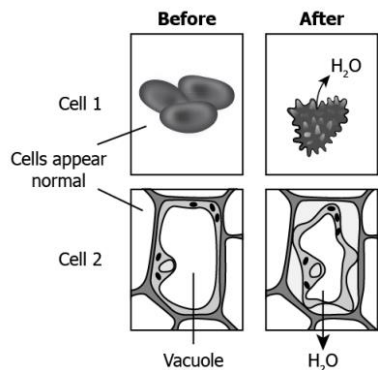
## HOLIDAY HOMEWORK WORKSHEET

**SUBJECT: SCIENCE**

**CLASS: IX**

Name: \_\_\_\_\_ Sec: \_\_\_\_\_ Roll No: \_\_\_\_\_

1. The image shows how the two cells appear before and after placing in a hypertonic solution.



Based on the behaviour of the cell, identify the cell types?

- (a) Cell 1: animal cell, Cell 2: plant cell
- (b) Cell 1: bacterial cell, Cell 2: plant cell
- (c) Cell 1: Plant cell, Cell 2: animal cell
- (d) Cell 1: animal cell, Cell 2: bacterial cell

Ans. \_\_\_\_\_

2. The table lists some functions performed by some cell structures.

<p>P. It separates the content of the cell from the surroundings.</p> <p>Q. It is a site where many cellular processes occur.</p> <p>R. It controls the process of cell division.</p> <p>S. It controls the movement of substances in and out of the cells.</p>
---

Which option shows the organelle correctly matched with the respective function?

- (a) Cytoplasm- Q and S, nucleus- P, plasma membrane- R
- (b) Cytoplasm- Q and R, nucleus- P, plasma membrane- S
- (c) Cytoplasm- Q, nucleus- R, plasma membrane- S and P
- (d) Cytoplasm- R, nucleus- Q, plasma membrane- S and P

Ans. \_\_\_\_\_

3. A form of matter that has no fixed shape but has a fixed volume. An example of this form of matter is:

- a) Carbon dioxide
- b) ice
- c) water vapour
- d) kerosene

Ans. \_\_\_\_\_

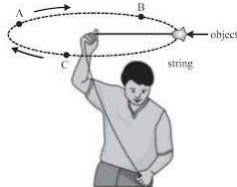
4. A few substances are arranged in the increasing order of 'forces of attraction' between their particles.

Which one of the following represents a correct arrangement?

- a) Water, air, wind
- b) Air, sugar, oil
- c) Oxygen, water, sugar
- d) Salt, juice, air

Ans. \_\_\_\_\_

5. The picture below shows a man swinging an object in a uniform circular motion. A, B and C are three different points on the path of motion of the object. What is the net displacement of the object after one complete swing?



- a)  $2\pi r$
- b) Zero
- c)  $\pi r$
- d)  $3\pi r$

Ans. \_\_\_\_\_

6. The numerical ratio of displacement to distance for a moving object is -

- a) Always less than 1
- b) Always equal to 1
- c) Always more than 1
- d) Equal or less than 1

Ans. \_\_\_\_\_

7. A freely falling object travels 4.9 m in 1<sup>st</sup> second, 14.7 m in 2<sup>nd</sup> second, 24.5 m in 3<sup>rd</sup> second, and so on. This data shows that the motion of a freely falling object is the case of:

- a) Uniform motion
- b) Uniform acceleration
- c) No acceleration
- d) Uniform velocity

Ans. \_\_\_\_\_

**DIRECTION:** For question numbers 7 and 8, two statements are given- one labelled Assertion (A) and the other labelled Reason (R). Select the correct answer to these questions from the codes (a), (b), (c) and (d) as given below:

- (a) Both A and R are true and R is correct explanation of the A.
- (b) Both A and R are true but R is not the correct explanation of the A.
- (c) A is true but R is false.
- (d) Both A and R are false.

8. **Assertion (A):** Plasma membrane is a selectively permeable membrane.

**Reason (R):** Plasma membrane allows entry and exit of substance from cell through the process of diffusion.

Ans. \_\_\_\_\_

9. **Assertion (A):** When a solid melts, its temperature remains the same.

**Reason (R):** The heat gets used up in changing the state by overcoming the forces of attraction between the particles.

Ans. \_\_\_\_\_

10. **Assertion (A):** An object can have constant speed but variable velocity.

**Reason (R):** Velocity changes due to change in direction, though speed is same.

Ans. \_\_\_\_\_

11. Why is mitochondria called 'powerhouse of cell'? Give one difference between mitochondria and plastid.

Ans. \_\_\_\_\_

\_\_\_\_\_

\_\_\_\_\_

\_\_\_\_\_

12. (a) What is the functional segment of DNA?

Ans. \_\_\_\_\_

(b) Name the pigment that imparts red and yellow colour to flowers.

Ans. \_\_\_\_\_

(c) What is membrane biogenesis?

Ans. \_\_\_\_\_

\_\_\_\_\_

13. A student spilled a bottle of ammonia in one corner of the laboratory. Soon the whole laboratory was filled with pungent irritating smell. The students immediately opened the windows and doors and switched on the exhaust fans. After sometime, students got relief. Explain what did actually happen?

Ans. \_\_\_\_\_

\_\_\_\_\_

\_\_\_\_\_

14. What does the odometer of an automobile measure?

Ans. \_\_\_\_\_

Which of the following is moving faster? Justify your answer.

(a) A scooter moving with a speed of 300 m per 1 minute

(b) A car moving with a speed of 36 km per hour.

Ans. \_\_\_\_\_

\_\_\_\_\_

\_\_\_\_\_



15. A car starts from rest and moves with a uniform acceleration of  $0.1 \text{ m/s}^2$  for 2 minutes. Find:

(a) The speed acquired

Ans. \_\_\_\_\_  
\_\_\_\_\_  
\_\_\_\_\_

(b) The distance travelled

Ans. \_\_\_\_\_  
\_\_\_\_\_  
\_\_\_\_\_

16. (a) "Lysosomes are known as scavengers of the cell." Justify the statement.

Ans. \_\_\_\_\_  
\_\_\_\_\_  
\_\_\_\_\_

(b) If you are provided with some vegetables to cook, you generally add salt into the vegetables during the cooking process. What happens to the vegetables after adding salt? Which mechanism is responsible for the changes? Explain.

Ans. \_\_\_\_\_  
\_\_\_\_\_  
\_\_\_\_\_  
\_\_\_\_\_

(c) What is the difference between nucleus and nucleoid?

Ans. \_\_\_\_\_  
\_\_\_\_\_  
\_\_\_\_\_  
\_\_\_\_\_

17. Account for the following:

a) Name the quantity measured by the area occupied below the velocity-time graph.

Ans. \_\_\_\_\_

b) Under what condition is the magnitude of the average velocity of an object equal to its average speed?

Ans. \_\_\_\_\_  
\_\_\_\_\_

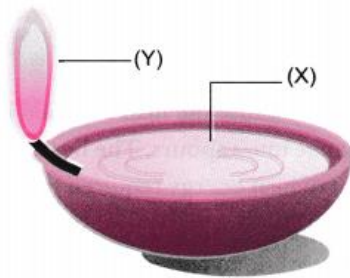
c) An example of uniformly accelerated motion.

Ans. \_\_\_\_\_

d) A body is moving along a circular path of radius  $R$ . What will the distance and displacement of the body when it completes a half revolution?

Ans. \_\_\_\_\_  
\_\_\_\_\_  
\_\_\_\_\_

18. a) The diagram below shows burning of an oil lamp.



Draw the arrangement of particles of position 'X' and 'Y' when the lamp is burning.  
Also give any two points of difference between 'X' and 'Y'.

Ans.

--	--

\_\_\_\_\_  
\_\_\_\_\_  
\_\_\_\_\_

b) Give reasons for the following:-

i. Gases are more compressible than solids or liquids.

Ans. \_\_\_\_\_  
\_\_\_\_\_  
\_\_\_\_\_

ii. Interconversion of matter is a constant temperature process.

Ans. \_\_\_\_\_  
\_\_\_\_\_  
\_\_\_\_\_

c) An inflated balloon collapses when pricked with a pin. Which state and which property is shown by this observation?

Ans. \_\_\_\_\_  
\_\_\_\_\_  
\_\_\_\_\_

19. The phenomenon of change of a liquid into vapours at any temperature below its **boiling point** is called evaporation. Water changes into vapours below  $100^{\circ}\text{C}$ . The particles of matter are always moving and are never at rest. At a given temperature in any gas, liquid or solid, there are particles with different K.E. In case

of liquids, a small fraction of particles at the surface, having higher K.E., is able to break the forces of attraction of other particles and gets converted into vapour.

a) Rate of evaporation decreases when common salt is added to water. Explain why?

Ans. \_\_\_\_\_  
\_\_\_\_\_  
\_\_\_\_\_

b) Evaporation causes cooling. Explain.

Ans. \_\_\_\_\_  
\_\_\_\_\_  
\_\_\_\_\_

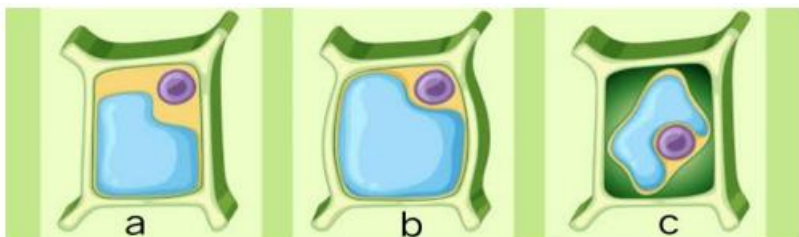
c) Giving one example in each case ,explain how evaporation increases with –

i) Increase in temperature

ii) Decrease of humidity.

Ans. \_\_\_\_\_  
\_\_\_\_\_  
\_\_\_\_\_  
\_\_\_\_\_

20. Study the given diagram and answer the following questions:



a) Identify the cell which is kept in hypotonic solution.

Ans. \_\_\_\_\_

b) Write one difference between osmosis and diffusion.

Ans. \_\_\_\_\_  
\_\_\_\_\_  
\_\_\_\_\_

c) What happens to the plant cell when placed in very concentrated external solution?

Ans. \_\_\_\_\_  
\_\_\_\_\_  
\_\_\_\_\_

d) What will happen if an animal cell is placed in a hypotonic solution?

Ans. \_\_\_\_\_  
\_\_\_\_\_  
\_\_\_\_\_

**DAV MODEL SCHOOL, KSTP, ASANSOL**

**WORKSHEET 1 (HOLIDAY HOMEWORK)**

**SESSION- 2024-25**

**SUBJECT- SST (HIST & CIVICS)**

**CLASS- IX**

**NAME:\_\_\_\_\_ ROLL NO:\_\_\_\_\_ SECTION:\_\_\_\_\_**

1. Who wrote the pamphlet called "What is the Third Estate"?

- a) Mirabeau, a nobleman
- b) Abbe Sieyes
- c) Rousseau, a philosopher
- d) Montesquieu

2. Assertion(A): Tithe was a tax levied by the Church.

Reason(R): It comprised one-tenth of the agricultural produce.

- (a) Both A and R are true and R is the correct explanation of A.
- (b) Both A and R are true but R is not the correct explanation of A.
- (c) A is True but R is false.
- (d) A is false but R is true

3. Assertion(A): Women's struggle for equal political rights continued for more than two hundred years after the French Revolution.

Reason(R): Finally in 1946 the women in the France won the right to vote.

- (a) Both A and R are true and R is the correct explanation of A.
- (b) Both A and R are true but R is not the correct explanation of A.
- (c) A is True but R is false.
- (d) A is false but R is true.

4. What is the significance of this picture?



- a) It describes the emancipation of the slaves.





- a) Unemployment.
- b) Poverty.
- c) Population Growth.
- d) Corruption.

9. What is the message given by the people in this image?



- a) Equality to right to vote and equal value of each man's vote.
- b) Election must offer a real choice between political parties.
- c) Political equality is the right of each individual.
- d) None of the above.

10. There are 40 villages in a district where the government has made no provision of drinking water. These villagers met and considered many methods of forcing the government to respond to their need.

Which of these is not a democratic method?

- a) Filing a case in the courts claiming that water is a part of right to life.
- b) Boycotting the next elections to give a message to all parties.
- c) Organizing public meetings against government's policies.
- d) Paying money to government officials to get water.

11. Identify the wrong matched pair.

1) ZANU-PF- Robert Mugabe

2) Iraq- Saddam Hussain

3) Saudi Arabia- Elected representatives rule from common people.

4) BA'ATH Party- Syria

a) Only 1 and 2

b) Only 3

c) Only 3 and 4

D) Only 2 and 3

12. Assertion(A): Democracy enhance the dignity of Citizens.

Reason(R): Democracy is based on the principle of political equality.

- (a) Both A and R are true and R is the correct explanation of A.
- (b) Both A and R are true but R is not the correct explanation of A.
- (c) A is True but R is false.
- (d) A is false but R is true.

13. Why don't we consider Chinese and Saudi Arabian a Democratic country?

---

---

---

---

---

14."Democracy is better than other forms of governments because it allows us to correct it's own mistakes." Do you agree with it ornot? Explain.

---

---

---

---

---

---

---

---

---

---

DAV MODEL SCHOOL, KSTP, ASANSOL

WORKSHEET 2 (HOLIDAY HOMEWORK)

SESSION- 2024-25

SUBJECT- SST (GEO & ECON)

CLASS- IX

NAME: \_\_\_\_\_ ROLL NO: \_\_\_\_\_ SECTION: \_\_\_\_\_

1.Assertion(A): The east-west extent appears to be smaller than the north-south extent.

Reason(R): There is a variation in latitudinal and longitudinal extensions of the Indian landmass.

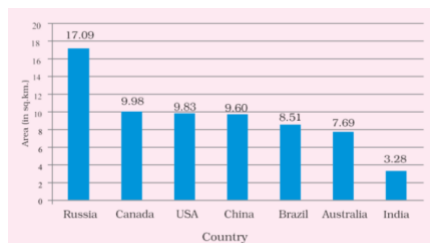
- (a) Both A and R are true and R is the correct explanation of A.
- (b) Both A and R are true but R is not the correct explanation of A.
- (c) A is True but R is false.
- (d) A is false but R is true.

2. Match the column A with B

Column A	Column B
i)Southernmost point	A. Arunachal Pradesh
ii) Westernmost point	B. Karakoram Range
iii) Easternmost point	C. Indira Point
iv) Northernmost point	D. Kutch

- a) i-D, ii-A, iii-B, iv-C
- b) i-C, ii-D, iii-A, iv-B
- c) i-B, ii-D, iii-C, iv-A
- d) i-A, ii-C, iii-B, iv-D

3. What does the given picture suggest?





- a) India is the seventh largest country in terms of area.
- b) India is spread in 3.28 million sq kms of area.
- c) Russia is much larger in size than India.
- d) All of the above.

4. Why did we choose 82°30' E longitude as the standard meridian of India?

---

---

---

---

---

---

---

---

5. On the given map of India mark the states with different colour, also write the names of the states with capital and draw the tropic of cancer on the map.



6. Simran own's a cloth manufacturing industry. Every month she orders colours for dying and yarn to prepare cloth from Suresh with whom she signed a contract.

What is the working capital of Simran?

- a) Colours for dying
- b) Yarn to make cloth
- c) Both A and B
- d) Industry

7. Statement (A): In Palampur, the yield of wheat grown from the traditional varieties was 1300kg per hectare.

Statement(B): With HYV seeds, the yield went up to 3100kg per hectare. There is a large production of wheat.

Codes:

- a) Both statement A and B are true.
- b) Both statement A and B are false.
- c) Statement A is true but B is false.
- d) Statement A is false but B is true.

8. In the given picture identify the kharif crop.



- a) Wheat,
- b) Bajra,
- c) Sugarcane
- d) Potato

9. Assertion(A): All the village in India do not have a high level of irrigation as in Palampur.

Reason(R): To increase production from the same piece of land, farmers do multiple cropping

- (a) Both A and R are true and R is the correct explanation of A.
- (b) Both A and R are true but R is not the correct explanation of A.
- (c) A is True but R is false.
- (d) A is false but R is true.

10. Assertion(A): Though there are a variety of non-farm activities, in Palampur, only a few people are involved in it.

Reason(R): Loan facilities and markets to sell non-farm products are not well developed here

- (a) Both A and R are true and R is the correct explanation of A.
- (b) Both A and R are true but R is not the correct explanation of A.
- (c) A is True but R is false.
- (d) A is false but R is true.

11. State any three advantages of multiple cropping.

---

---

---

---

---

---

---

---

12. "Without Human capital the presence of natural resources and physical capital are of no use." Justify the statement with example.

---

---

---

---

---

---

---

---

---

---

---

---

---

---

---

---

---

---

---

---

---

---

---

---